



Camden Road, *Camden NW1*

**CHESTERTONS**  
*Camden & Regent's Park*



## Camden Road

### *Camden NW1*

price on application - leasehold

*A variety of one to three bedroom apartments, in a beautiful conversion close to Kings Cross.*

A collection of stunning 1,2 & 3 bedroom apartments newly converted within this Victorian house. With prices starting from £499,950 these exceptional properties offer original period features blended perfectly with a modern contemporary finish.

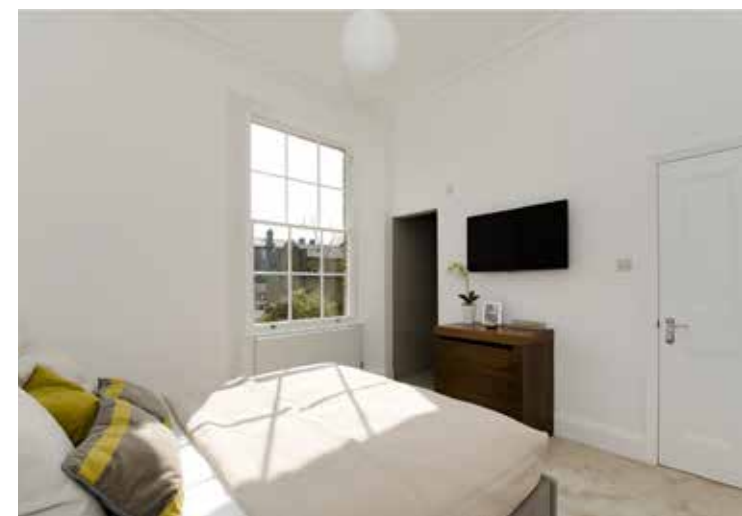
Located on the fringes of the highly sought after Camden Square conservation area and being within 0.8 miles of the fabulous new development at Kings Cross.



The international Eurostar terminal at St Pancras is a little further on. There are numerous bus routes nearby, along with Kentish Town and Camden Town stations on the Northern line and Camden Road station on the Overground offering links to and from the City.

Camden School for Girls is close offering an exceptional school with mixed Sixth Form.



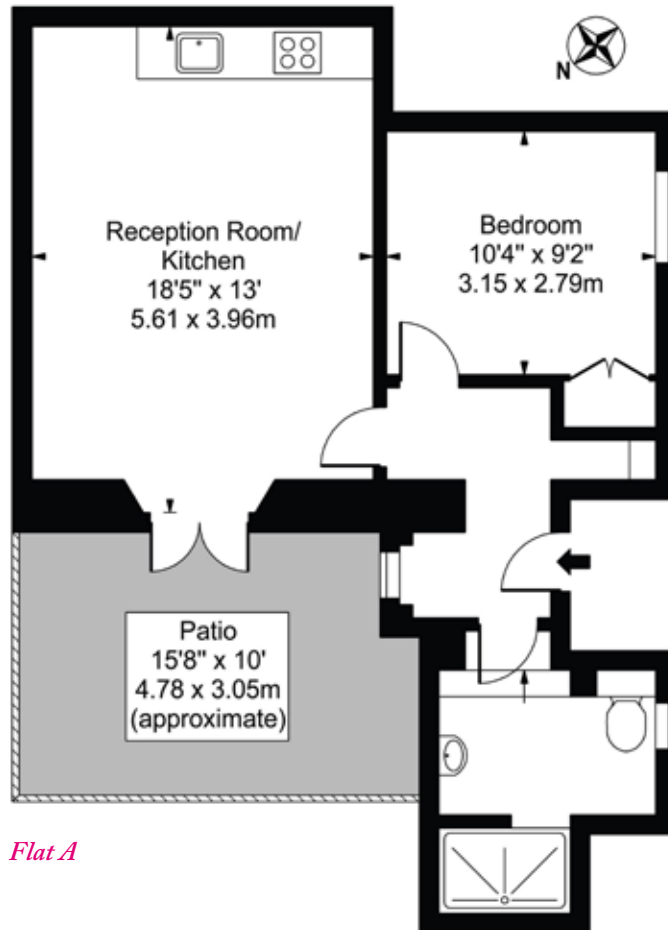






## Camden Road, NW1

Approximate Gross Internal Area 476 sq ft / 44 sq m



*Flat A*

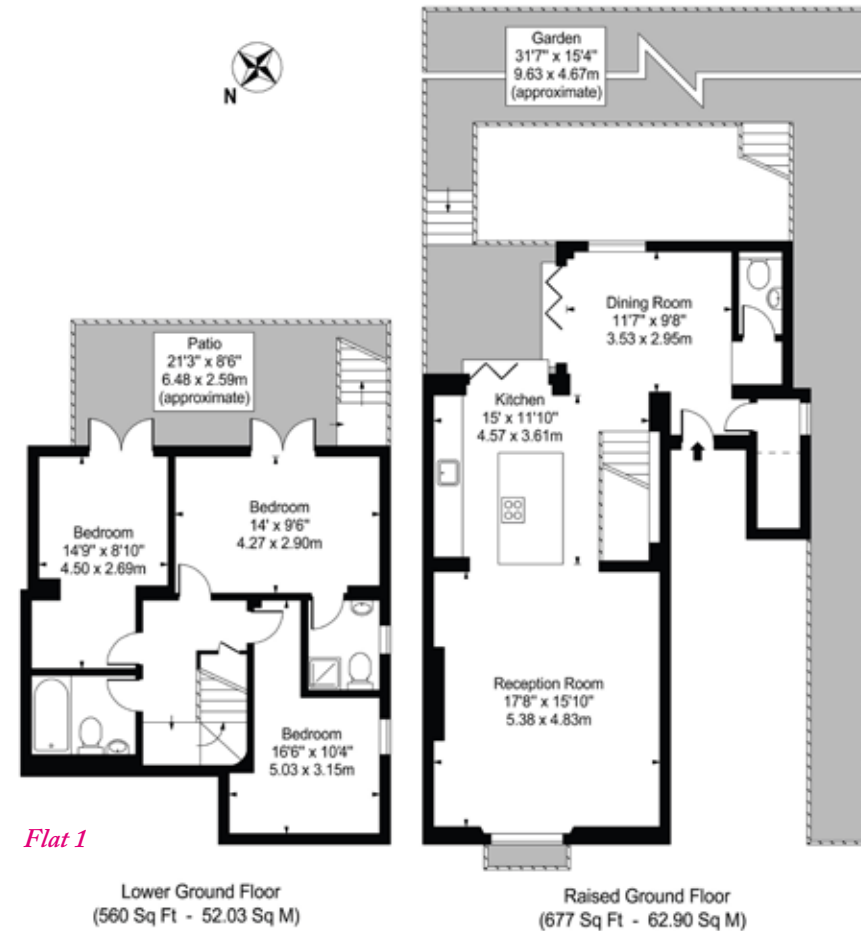
### Lower Ground Floor

For Illustration Purposes Only - Not To Scale

This floor plan should be used as a general outline for guidance only and does not constitute in whole or in part an offer or contract.  
Any intending purchaser or lessee should satisfy themselves by inspection, searches, enquiries and full survey as to the correctness of each statement.  
Any areas, measurements or distances quoted are approximate and should not be used to value a property or be the basis of any sale or let.

## Camden Road, NW1

Approximate Gross Internal Area 1237 sq ft / 114 sq m



*Flat 1*

Lower Ground Floor  
(560 Sq Ft - 52.03 Sq M)

Raised Ground Floor  
(677 Sq Ft - 62.90 Sq M)

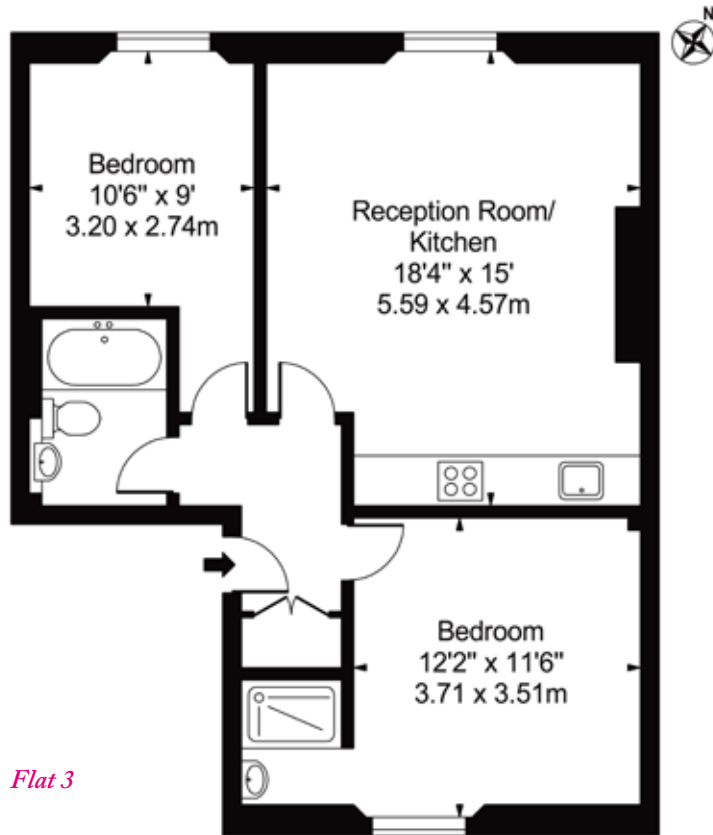
For Illustration Purposes Only - Not To Scale

This floor plan should be used as a general outline for guidance only and does not constitute in whole or in part an offer or contract.  
Any intending purchaser or lessee should satisfy themselves by inspection, searches, enquiries and full survey as to the correctness of each statement.  
Any areas, measurements or distances quoted are approximate and should not be used to value a property or be the basis of any sale or let.



## Camden Road, NW1

Approximate Gross Internal Area 634 sq ft / 58 sq m



*Flat 3*

### Second Floor

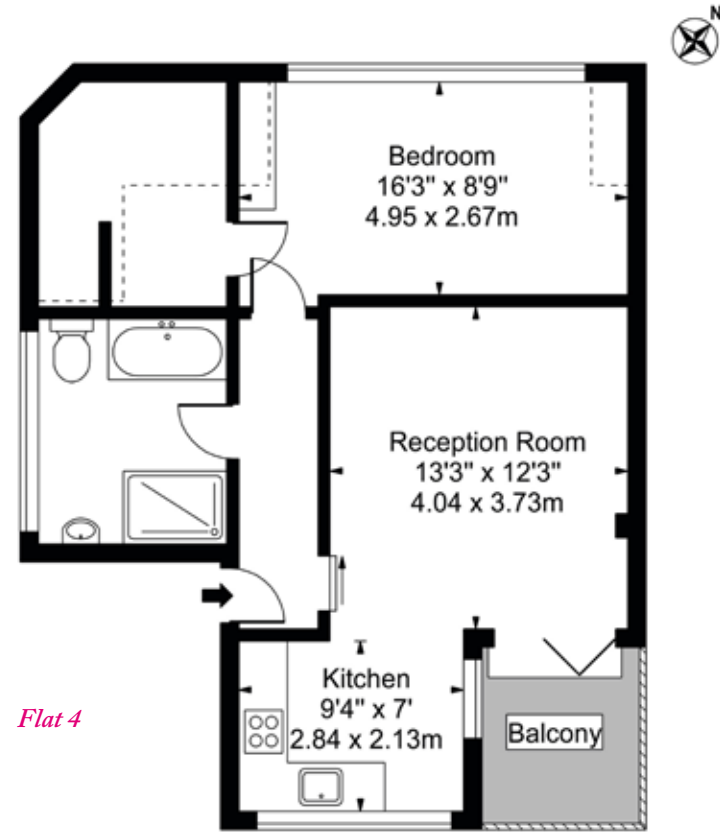
For Illustration Purposes Only - Not To Scale

This floor plan should be used as a general outline for guidance only and does not constitute in whole or in part an offer or contract. Any intending purchaser or lessee should satisfy themselves by inspection, searches, enquiries and full survey as to the correctness of each statement. Any areas, measurements or distances quoted are approximate and should not be used to value a property or be the basis of any sale or let.

## Camden Road, NW1

Approximate Gross Internal Area 584 sq ft / 54 sq m  
(Including Restricted Height Area)

Approximate Gross Internal Area 522 sq ft / 48 sq m  
(Excluding Restricted Height Area)



*Flat 4*

### Third Floor

For Illustration Purposes Only - Not To Scale

This floor plan should be used as a general outline for guidance only and does not constitute in whole or in part an offer or contract. Any intending purchaser or lessee should satisfy themselves by inspection, searches, enquiries and full survey as to the correctness of each statement. Any areas, measurements or distances quoted are approximate and should not be used to value a property or be the basis of any sale or let.

All the apartments  
benefit from an  
EPC rating of C

Chesterton Global Ltd trading as Chestertons for themselves and for the vendor of this property whose agents they are, give notice that (i) these particulars do not constitute any part of an offer or contract, (ii) all statements contained within these particulars are made without responsibility on the part of Chestertons or the vendor, (iii) whilst made in good faith, none of the statements contained within these particulars are to be relied upon as a statement or representation of fact, (iv) any intending purchasers must satisfy themselves by inspection or otherwise as to the correctness of each of the statements contained within these particulars, (v) the vendor does not make or give either Chestertons or any person in their employment any authority to make or give representation or warranty whatsoever in relation to this property. Wide-angle lenses may be used. © Copyright Chestertons | Chesterton Global Ltd | Registered Office Connaught House 1-3 Mount Street, Mayfair, London, W1K 3NB Registered Company Number 05334580.

### *Chestertons Camden*

99-101 Parkway,  
Camden,  
London  
NW1 7PP  
020 7267 2053  
sales.camden@chestertons.com  
www.chestertons.com